



Saracen Distribution
Unit 9, Grandstand Business Centre
Faraday Road, Hereford, HR4 9NS
Tel No: 01432 344133
Fax No: 01432 34412
Mobile: 07836 756468
info@saracendistribution.co.uk
<http://www.saracendistribution.co.uk>

SENTINEL 4.0 Tonne 2 POST HYDRAULIC LIFT

SF 8893/3

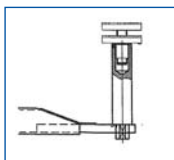


KEY FEATURES

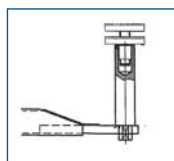
- Baseless design with a clear floor between columns.
- Suitable for light goods vehicles
- Automatic arm locking
- 24v 'dead man' controls
- Overload safety valve
- Foot protection fitted to lifting arms



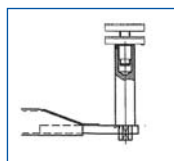
SENTINEL 4000kg CAPACITY TWO POST LIFT



High Lift Pad 100mm



High Lift Pad 170mm



High Lift Pad 250mm

INSTALLATION & APPLICATION

The SF 8893 is a heavy duty 2 post lift suitable for lifting light commercial vehicles up to a gross vehicle weight of 4000kg. Additionally the lift has been designed to accommodate a range of smaller vehicles such as car derived vans, off road vehicles and larger cars. The SF 8893 is supplied with an overhead gantry allowing a clearance of 4000mm, the SF 8893/1500 models offer an increased overhead clearance for clients wishing to lift vehicles such as higher bodied box vans. Please note that for most vans and 4x4 vehicles additional lifting pad extensions will be required, see below for options. The lift installation requires a floor of 150mm thickness constructed of CF72 mesh concrete, power supply via a fused isolator rated at 8 amp for 3Ph and 16 amp for 1Ph installations. Please note that the roof height must be an additional 500mm to the total lift height to allow installation.

OPTIONS & ACCESSORIES

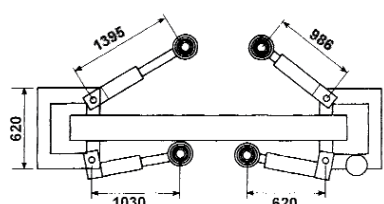
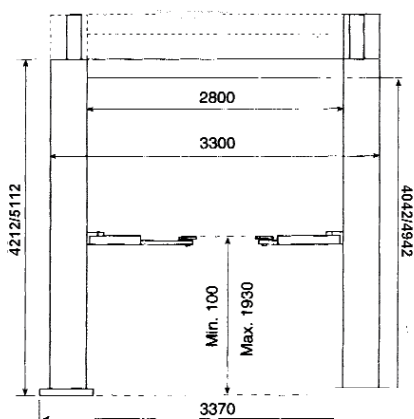
High lift pad 100mm extension set of 4	OA 50734
High lift pad 170mm extension set of 4	OA 50735
High lift pad 250mm extension set of 4	OA 50736

PART NO & ORDERING INFORMATION

Sentinel 4.0t Hydraulic Lift 3Ph 4000mm Clearance	SF 8893/3/600
Sentinel 4.0t Hydraulic Lift 3Ph 4900mm Clearance	SF8893/3/1500
Sentinel 4.0t Hydraulic Lift 1Ph 4000mm Clearance	SF8893/1/600
Sentinel 4.0t Hydraulic Lift 1Ph 4900mm Clearance	SF8893/1/1500

TECHNICAL SPECIFICATIONS & DIMENSIONS

Min Pad Height	105mm
Raised Height	1945mm
Maximum Load	4000kg
Maximum Lifting Time	35 sec
Power Supply	400v 3Ph/230v 1Ph/50Hz
Fused Isolator Rating	8 amp (3Ph) 16 amp (1Ph)
Motor Supply	3.0Kw
Passage Width	2240mm
Gross Weight	850kg



SERVICE

Tecalemit have a team of over 50 service engineers covering the whole of the UK. On-site maintenance, testing, re-calibration and trouble-shooting can all be carried out with the minimum of fuss and downtime for customers. Please consult our Plymouth Service Centre for further information on 01752 219100.

WARRANTY

All products carry a 12 month warranty from the date of supply/installation, installation to be carried out by Tecalemit engineers. Exceptions to this being electrical cables and consumables.

SALES

Tecalemit Garage Equipment Co Ltd, Eagle Road, Langage Business Park, Plympton, Plymouth, Devon PL7 5JY

Tel: 00 44 (0) 1752 219111
 Fax: 00 44 (0) 1752 219128
 Email: sales@tecalemmit.co.uk
 Web: www.tecalemmit.co.uk

