



Saracen Distribution
Unit 9, Grandstand Business Centre
Faraday Road, Hereford, HR4 9NS
Tel No: 01432 344133
Fax No: 01432 34412
Mobile: 07836 756468
info@saracendistribution.co.uk
http://www.saracendistribution.co.uk

SENTINEL 5.0 Tonne 2 POST HYDRAULIC LIFT

SF 9025

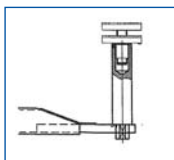


KEY FEATURES

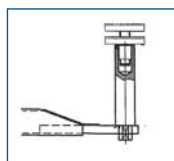
- Baseless design with a clear floor between columns.
- Symmetric Arm design for lifting long wheel base vehicles
- Suitable for light goods vehicles
- Automatic arm locking
- 24v 'dead man' controls
- Overload safety valve
- Foot protection fitted to lifting arms



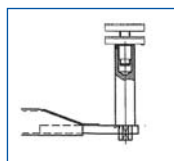
SENTINEL 5000kg CAPACITY TWO POST LIFT



High Lift Pad 100mm



High Lift Pad 170mm



High Lift Pad 250mm

INSTALLATION & APPLICATION

The SF 9025 is a heavy duty 2 post lift suitable for lifting light commercial vehicles up to a gross vehicle weight of 5000kg. The symmetric arm design allows for lifting of long wheel base vehicles such as Sprinter and Boxer type vans and the generous drive through width of 2725mm will accommodate most LGV's. The SF 9025 is supplied with an extra high overhead gantry allowing a clearance of 490mm. Please note that for most vans and 4x4 vehicles additional lifting pad extensions will be required, see below for options. The lift installation requires a floor of 150mm thickness constructed of CF72 mesh concrete, power supply via a fused isolator rated at 10 amp for 3Ph and 16 amp for 1Ph installations. Please note that the roof height must be a minimum of 5770mm to allow for installation.

OPTIONS & ACCESSORIES

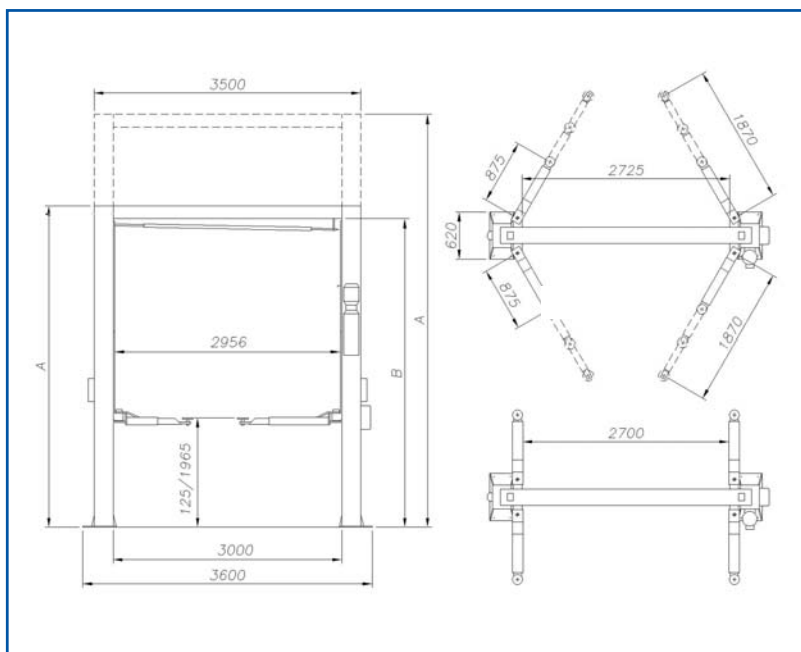
High lift pad 100mm extension set of 4	OA 50734
High lift pad 170mm extension set of 4	OA 50735
High lift pad 250mm extension set of 4	OA 50736
Security Straps - set of 4	OA 60242
Chassis Crutch Adaptor	OA 60264
Ford Transit Kit (Security Straps & Risers)	OA 60255

PART NO & ORDERING INFORMATION

Sentinel 5.0t Hydraulic Lift 3Ph 4900mm Clearance	SF 9025
Sentinel 5.0t Hydraulic Lift 1Ph 4900mm Clearance	SF 9025/1

TECHNICAL SPECIFICATIONS & DIMENSIONS

Min Pad Height	125mm
Raised Height	1965mm
Maximum Load	5000kg
Maximum Lifting Time	35 sec 3Ph /Sec 1Ph
Power Supply	400v 3Ph/230v 1Ph/50Hz
Fused Isolator Rating	10 amp 3Ph 16 amp 1Ph
Motor Supply	3.0Kw 3Ph / 2.2Kw 1Ph
Passage Width	2700mm
Gross Weight	1010kg



SERVICE

Tecalemit have a team of over 50 service engineers covering the whole of the UK. On-site maintenance, testing, re-calibration and trouble-shooting can all be carried out with the minimum of fuss and downtime for customers. Please consult our Plymouth Service Centre for further information on 01752 219100.

WARRANTY

All products carry a 12 month warranty from the date of supply/installation, installation to be carried out by Tecalemit engineers. Exceptions to this being electrical cables and consumables.

SALES

Tecalemit Garage Equipment Co Ltd, Eagle Road, Langage Business Park, Plympton, Plymouth, Devon PL7 5JY

Tel: 00 44 (0) 1752 219111
 Fax: 00 44 (0) 1752 219128
 Email: sales@tecalemmit.co.uk
 Web: www.tecalemit.co.uk

