



Saracen Distribution  
Unit 9, Grandstand Business Centre  
Faraday Road, Hereford, HR4 9NS  
Tel No: 01432 344133  
Fax No: 01432 34412  
Mobile: 07836 756468  
info@saracendistribution.co.uk  
http://www.saracendistribution.co.uk

# AZUR 3.6 Tonne 2 POST ELECTRO MECHANICAL LIFT

## SF 9035

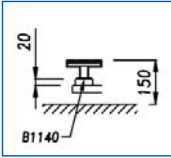


### KEY FEATURES

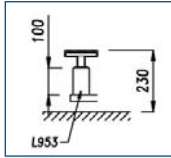
- Suitable for LGV and long wheel base vehicles
- Twin motors with shaft synchronisation
- Symmetric lifting arm design
- Increased width between columns
- Heavy Duty Components & Materials



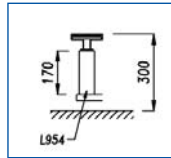
# AZUR 3600kg CAPACITY TWO POST LIFT



High Lift Pad 20mm



High Lift Pad 100mm



High Lift Pad 170mm

## INSTALLATION & APPLICATION

The SF 9035 Azur offers a lifting capability for light goods vehicles without the restrictions of an overhead gantry with the added benefit of a baseframe and shaft synchronisation to ensure durability and performance. The symmetric arm design also enables longer wheel base vehicles to be securely raised. Installation should be onto a minimum of 160mm concrete base, please consult Tecalemit for further details, 400V, 3Ph power via 25 amp fused isolator.

## PART NO & ORDERING INFORMATION

Azur 3.6t 2 Post Mechanical Lift 3Ph  
with baseframe

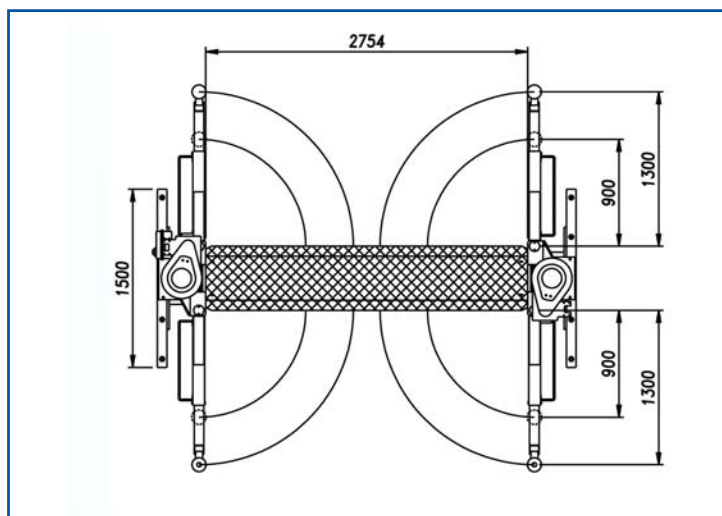
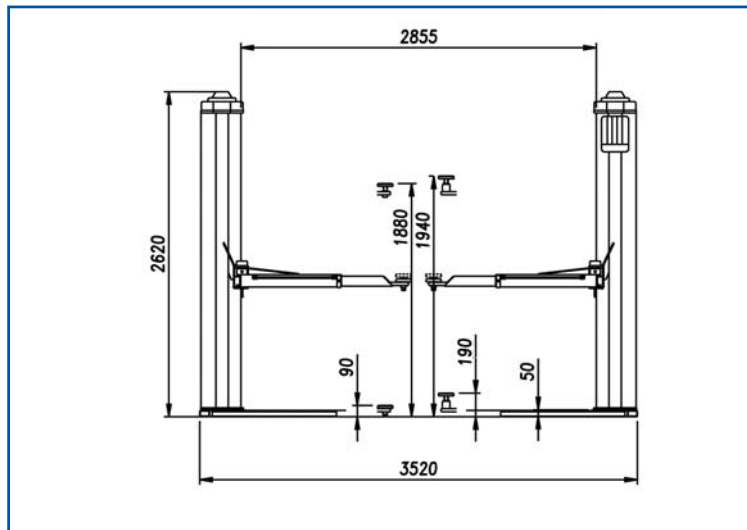
SF 9035

## TECHNICAL SPECIFICATIONS & DIMENSIONS

Pad Height - min	90mm
Motor Supply	2 x 3KwKw
Raised Height	1890mm
Passage Width	2869mm
Maximum Load	3600Kg
Lifting Height	1890mm
Maximum Lifting Time	50 secs
Net Weight	850Kg
Power Supply	400V, 3Ph
Gross Weight	750Kg
Fused Isolator Rating	25 amp
Shipping Specifications	2093 x 780 x 930mm

## OPTIONS & ACCESSORIES

High Lift Pad Kit 20mm Extension Set of 4	OA 50740
High Lift Pad Kit 100mm Extension Set of 4	OA 50734
High Lift Pad Kit 170mm Extension Set of 4	OA 50735



### SERVICE

Tecalemit have a team of over 50 service engineers covering the whole of the UK. On-site maintenance, testing, re-calibration and trouble-shooting can all be carried out with the minimum of fuss and downtime for customers. Please consult our Plymouth Service Centre for further information on 01752 219100.

### WARRANTY

All products carry a 12 month warranty from the date of supply/installation, installation to be carried out by Tecalemit engineers. Exceptions to this being electrical cables and consumables.

### SALES

Tecalemit Garage Equipment Co Ltd, Eagle Road,  
Langage Business Park, Plympton, Plymouth,  
Devon PL7 5JY

Tel: 00 44 (0) 1752 219111  
Fax: 00 44 (0) 1752 219128  
Email: sales@tecalemit.co.uk  
Web: www.tecalemit.co.uk

