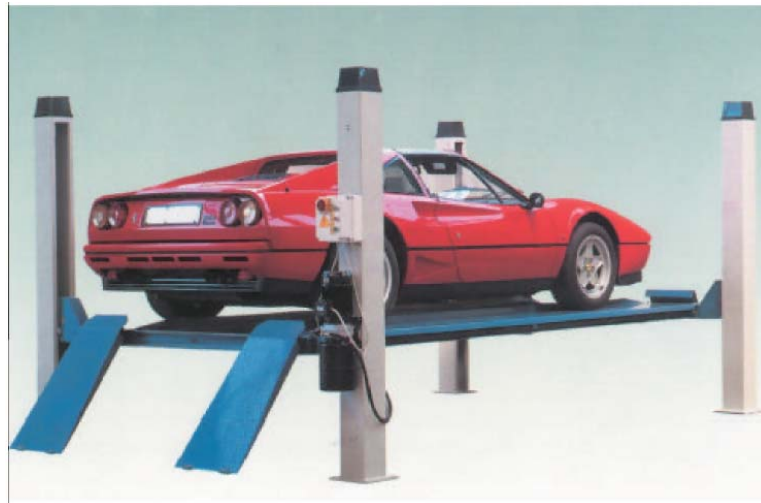




Saracen Distribution
Unit 9, Grandstand Business Centre
Faraday Road, Hereford, HR4 9NS
Tel No: 01432 344133
Fax No: 01432 34412
Mobile: 07836 756468
info@saracendistribution.co.uk
http://www.saracendistribution.co.uk

QUADRA SERVICE LIFT 3.5 Tonne 4 POST

SF 9014



KEY FEATURES

- Compact design
- Ideal for general vehicle servicing
- Auto-chock drive on ramps
- Surface mounted or recessed application
- Electro-Hydraulic operation



QUADRA SERVICE LIFT 3500kg

INSTALLATION & APPLICATION

The new SF9014 lift from Tecalemit is suitable for general workshop servicing and repairs. Please note that the lift is NOT SUITABLE FOR CLASS IV MOT USE. The lift features a manual release for the safety latching system and electronic and hydraulic safety systems.

Installation

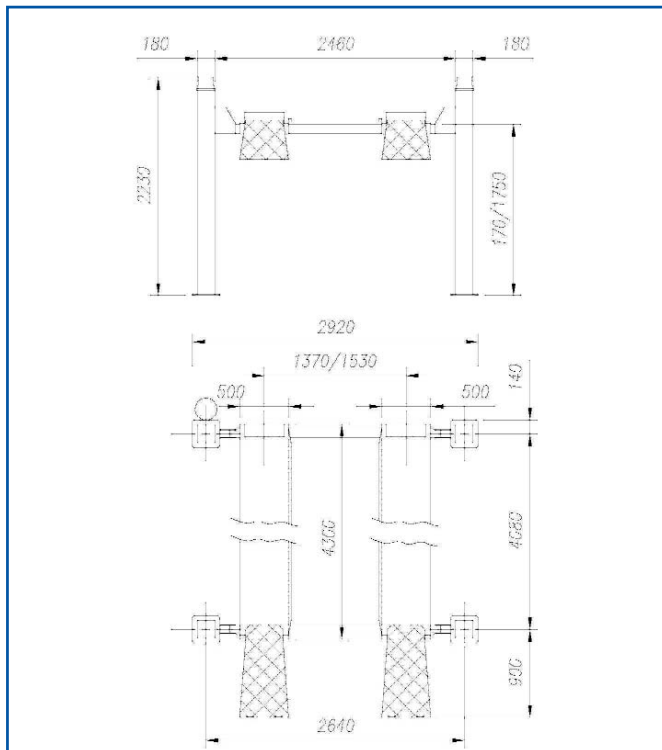
The floor onto which the lift is to be installed should be a level +/- <8mm. The concrete pad onto which the columns are secured should be constructed of C30 concrete 160mm thick, excluding the thickness of any screed or paving that may be added. If in doubt a qualified person (structural engineer) should be consulted.

For lifts requiring a 3ph power supply (400v, 1.85Kw) there should be a fused circuit protection. Should lighting kits or other accessories be required a neutral conductor should be provided.

RECOMMENDED JACKING BEAM

Tecalemit recommends the following Jacking Beam with the Quadra Service lift:

Description	Part No
1.8t capacity manually operated Jacking Beam	SS 8755



PART NO & ORDERING INFORMATION

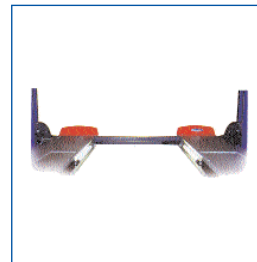
Quadra Service 3.5t 4 Post Lift Surface Mounted	SF 9014
Quadra Service 3.5t 4 Post Lift Recessed	SF 9014 / REC
Quadra Service 3.5t 4 Post Lift Surface Mounted 1Ph	SF 9014/1
Quadra Service 3.5t 4 Post Lift Recessed, 1Ph	SF 9014/REC/1

TECHNICAL SPECIFICATIONS & DIMENSIONS

Maximum Load	3500kg
Maximum Lifting Time	50 sec
Power Supply	400 v 3Ph
Motor Supply	2.2 Kw
Raised Platform Height	1750mm
Lowering Time	45 sec
Fuse Isolator Rating	15 amp
Net Weight	950 Kg

OPTIONS & ACCESSORIES

4 Tube Lighting Kit when installed with lift	OA 60342
--	----------



4 tube lighting kit

SERVICE

Tecalemit have a team of over 50 service engineers covering the whole of the UK. On-site maintenance, testing, re-calibration and trouble-shooting can all be carried out with the minimum of fuss and downtime for customers. Please consult our Plymouth Service Centre for further information on 01752 219100.

WARRANTY

All products carry a 12 month warranty from the date of supply/installation, installation to be carried out by Tecalemit engineers. Exceptions to this being electrical cables and consumables.

SALES

Tecalemit Garage Equipment Co Ltd, Eagle Road, Langage Business Park, Plympton, Plymouth, Devon PL7 5JY

Tel: 00 44 (0) 1752 219111
 Fax: 00 44 (0) 1752 219128
 Email: sales@tecalemmit.co.uk
 Web: www.tecalemmit.co.uk

